

For Lease

6800 Cedar Lake Road
St. Louis Park, Minnesota 55426



PID #:
Building size: 74,222 square feet
Lot size: 4.16 acres
Zoning: R-2 Single Family
Parking: Ample
Year built: 1922 & 1952
Classrooms: Twenty-two
Gymnasium: One
Theatre: One
Offices: Eight
Kitchen: One
Locker Rooms: Two
Cafeteria: One
Lease rate: \$12.00 per square foot

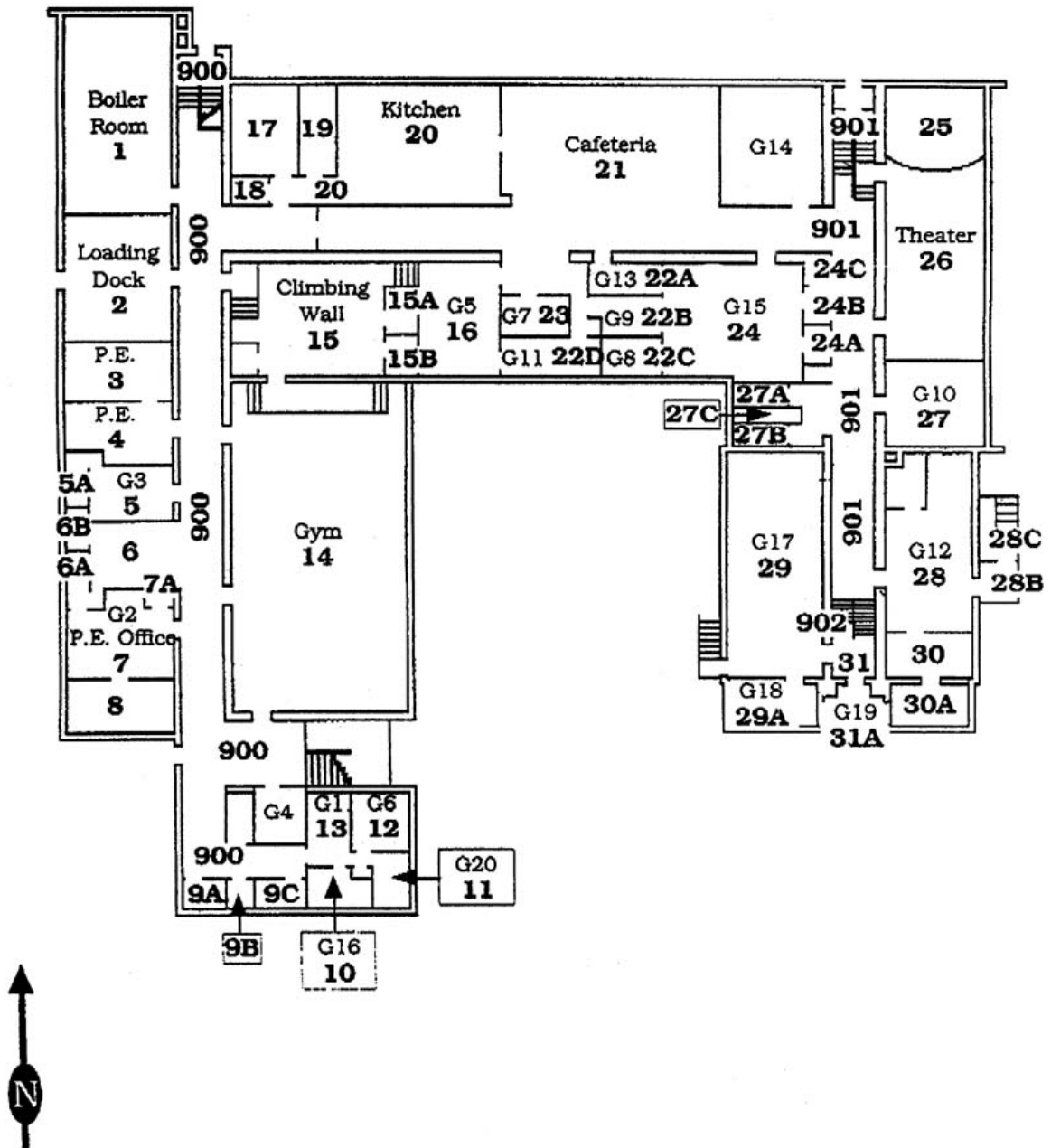
Eliot Ground Floor



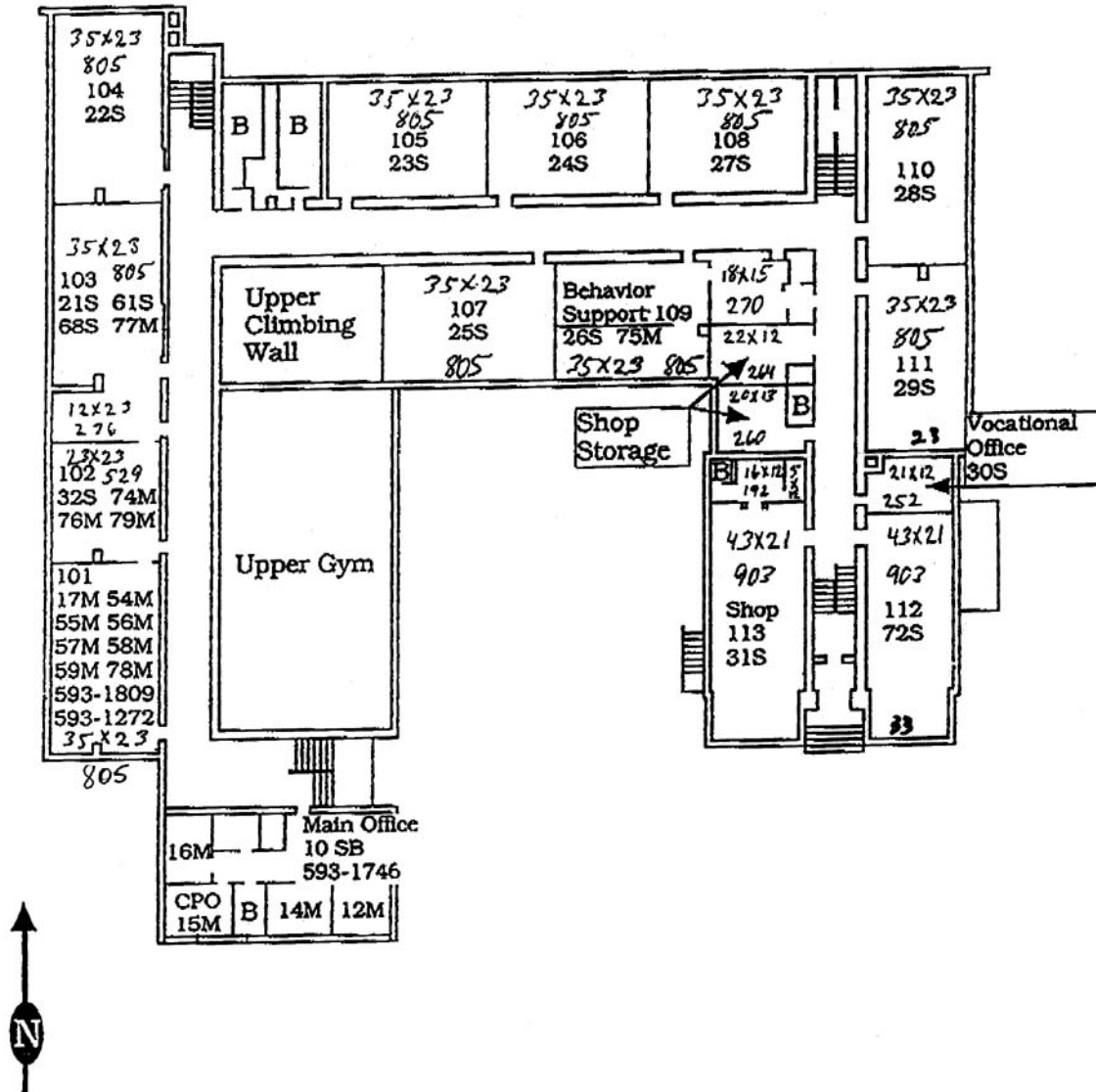
For more information, please contact:
Garfield Clark 612-333-6688
gclark@garfieldclark.com

GARFIELD CLARK
& ASSOCIATES
COMMERCIAL REAL ESTATE

Eliot Ground Floor



Eliot 1st Floor



Eliot 2nd Floor

